



# San Juan Historical Society & Museum

Fall 2016

## *We did it! Thank you!*

In our last newsletter we made the appeal to help us raise \$4,000 needed to construct a protective cover for our vintage Advance-Rumely threshing machine. The call was answered and the response was overwhelming!

Thanks to generous donors and the San Juan Island Community Foundation, a total of \$6,875 was raised during the San Juan County Fair Matching Grant program. The program is made possible by the San Juan Island Community Foundation and benefits specific needs for select non profits.

The additional funding will allow for an improved interpretive display with additional descriptive signage illustrating how the machine worked. The thresher will be an outside exhibit and will tie into the Museum of History and Industry (MHI) farming exhibit wing.

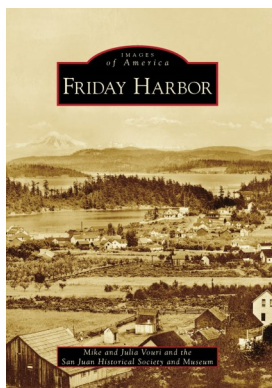
This year was the second time the Community Foundation chose the Museum as a beneficiary of the program. In 2014, \$10,000 was raised from the program which was used in the development of the atrium/welcoming wing of the MHI.

The Community Foundation has provided much needed support over the years for other Museum

projects such as the structural expansion of the MHI, expanded oral history collection, fire-proof photo storage cabinet and office copier.

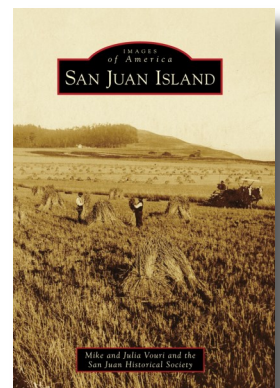
In recently discovered details about the thresher, the late Ed Tuck recalled a tale of the thresher's arrival on the island in 1917. He described it as arriving via barge and created quite a spectacle as it made its way up the hill, Spring Street. We can't think of a more fitting tribute for marking its 100 year arrival on the island.

We are most appreciative of the San Juan Island Community Foundation and the donors that have made this project possible. Thank you for your support of this project!



## *Give the gift of local history*

For the history buff on you gift list we have an assortment of options. The popular Friday Harbor and San Juan Island books, postcards, gift memberships, image reproductions from the collection and other local history publications. You will feel even better knowing that 100% of the proceeds from the sales of the Friday Harbor and San Juan Island books benefit the Museum. You can order by phone, email or call ahead to stop by. You can reach us at 378-3949 or [museum\\_admin@sjmuseum.org](mailto:museum_admin@sjmuseum.org)



## ***Museum of History and Industry Update: Moving on to the next phase***

Work on the farming exhibit wing will begin soon and in two stages. Thanks to a successful fundraising campaign for the thresher cover, construction will begin within the next month. The thresher is an important element in the overall plan for the Museum of History and Industry, (MHI).

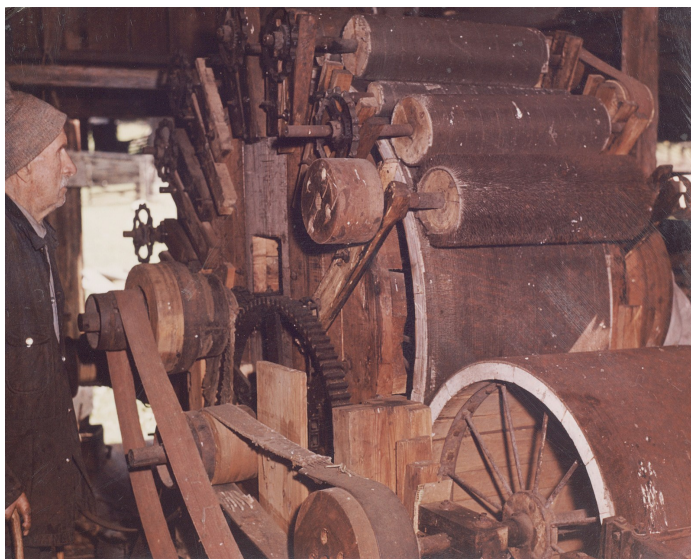
Early in the New Year, inside work will begin which will be showcased by an iconic island artifact: settler Jim Crook's homemade one-of-a-kind carding machine, used for processing wool from the sheep he raised. He made his own clothes—hats, jackets and pants—from wool that was processed on this machine.

The 20-foot-long, two-ton carding machine fashioned from a manure spreader and spare tractor parts, is imposing in size and is an example of the ingenuity that Jim Crook exhibited his entire life. For more on the fascinating life of farmer and inventor Jim Crook, visit: [washingtonruralheritage.org](http://washingtonruralheritage.org) and search for Jim Crook.

The farming exhibit wing will encompass the most square footage of all the exhibit areas. Preliminary work has been completed to the

main entrance to farming area as well as a stair accessible hayloft for additional exhibit space.

Several large components will highlight the farming wing including a vintage tractor being donated by a private collector. From the Museum collection, a hit and miss engine, a fanning mill and a seed spreader will round out the collection of larger artifacts. Stay tuned!



*Jim Crook gazes upon his magnificent carding machine in this undated image.*

## ***Ways to help in the continuing development of the MHI***

**Purchase a commemorative brick:** Pave the way to the completion of the MHI. By purchasing a brick for \$250 you will support the continuing development of the MHI. Do it for yourself, your family or as a memorial. Ten bricks have been installed and more are on the way. We make it easy for you. Please visit our website, [sjmuseum.org](http://sjmuseum.org) and go to the link where you can personalize and purchase your brick all in one place.



**Become a donor:** Financial contributions of all denominations are needed to assist in continuing our work on this exciting project. You can make a donation to a particular exhibit wing or a part of an exhibit. You can also donate your energy, creative talents and enthusiasm to get us closer to reaching our goal of completion.

**See for yourself:** Take a tour. We are confident you will like what you see. Call or email to arrange a personal, behind-the-scenes tour with Museum Director, Kevin Loftus.

***We remain committed to forgoing loans and other debt to fund this project. We rely on grants, individual financial contributions and donations of in-kind services and materials.***

*Partial funding of the MHI has been made possible by grants from the Heritage Capital Project Fund administered by the Washington State Historical Society.*



## Quilt Raffle Winner Announced

The lovingly crafted Spiderweb Quilt, donated by Kitty Sorgen and longed for by many, has been won by Ms. Synneve Alameddine, a visiting dentist from Pleasant Hill, California. The quilt was shown at the 50<sup>th</sup> Anniversary celebration of the Museum, the Pig War Picnic, and every day at the San Juan County Fair, resulting in a donation of \$1,190 to the Museum.

Kitty is a shining example of a volunteer who has an idea, executes the idea, and supports it all the way through to the end. She created the quilt, did 90% of the raffle sales, and on October 31<sup>st</sup>, came to the museum to pull the winning ticket.

The San Juan Historical Society and Museum values Kitty and her continuing contributions to our efforts. More of Kitty's quilts can be seen in various buildings at the Museum.



## Historical Scavenger Hunt Results

The 2016 San Juan Island Historical Scavenger Hunt took participants off the usual tourism paths and deeper into the history of San Juan Island. By visiting eight historical sites and correctly answering clues related to each site, each participant had the opportunity to win a fabulous prize.

The sites were: Brickworks, Memorial Park, Cattle Pont Lighthouse, King Sisters Preserve, the restored lime kiln at Lime Kiln Point State Park, English Camp Cemetery, the quarry trails and McMillin Mausoleum at Roche Harbor.

Each location provided an opportunity to learn a different aspect of island history. Examples included: What are the first two lines on John McMillin's chair at the McMillin Mausoleum? A 32° Mason and Knight Templar.

What is the first word on the tombstone for William Davis, interred at English Camp Cemetery? Sacred.

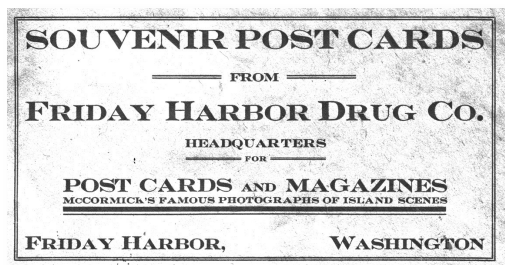
The lucky names of the lucky winners were:

Susan Swan-Esposito—A \$100 gift card for Valmark redeemable at King's Market, King's Marine and Marketplace.

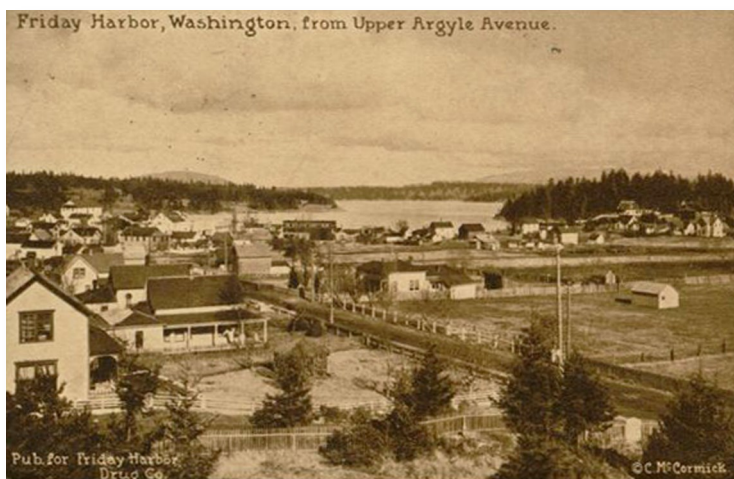
Miles Nelson—A \$50 gift card for the Palace Theatre.

Bobby Ryan—A \$25 gift card for Ernie's Café.

Thanks to all participants and to Ernie's Café for providing the wonderful prizes.



Local photographer John (J.A.) McCormick left a lasting legacy of island life with his many "famous photographs of island scenes" in the early-20th-century. His images were ideal for the postcard trade. Friday Harbor Drug Co. was a great avenue to get his images into wide circulation.



## Winter Archive Project

As we celebrated our 50<sup>th</sup> year anniversary this year, we began to look around at the archival collection we are so honored to care for, and realized it was time for a serious renovation project to prepare the Museum for the next 50 years. As a result, the Museum will be open on a limited basis from December through April of 2017 in order to refresh and renovate our collection.

Because of this project, the Museum will not be holding the annual Old-Fashioned Christmas Celebration. We do look forward to December 2017, when we will be presenting this time-honored tradition once again.

Volunteers will be needed for the Archive Project, beginning in January 2017. There is a need for **organizers, researchers, photographers, amateur archivists, exhibit planners, and just about every facet of volunteering one could imagine.**

There will be a volunteer orientation, specific tasks, and **the opportunity to contribute your time and effort towards making the San Juan Historical Society and Museum a vital part of the community for years to come.**

If you would like to be a part of this effort please contact us at [museum\\_admin@sjmuseum.org](mailto:museum_admin@sjmuseum.org), or 378-3949. We welcome your assistance.



## History tidbits.....



Etta Lighthouse Egeland & Margaret Lighthouse Egeland July 4, 1914.  
(No mention of the dog's name.)

November 10, 2016 marked the 120<sup>th</sup> birthday of Etta Egeland, a founder of the San Juan Historical Society and Museum. Although sadly, Etta passed in 2002, we imagine that if she were still with us, she would have spent her 120<sup>th</sup> birthday at the James King Farmhouse, organizing some new project.

The tasting room at the San Juan Vineyards was originally schoolhouse No. 22, built in 1896 and used as a school on the island until 1917.

The first Lifetime Member of the Historical Society and Museum was awarded in 1966 to George E. Peacock, who donated the James King Farmhouse to the Historical Society for use as a Museum.

continued on page 5



## ***New & Renewing Members and Donations***

### **Business Members**

*Olympic Lights B&B*  
*Store More Storage*  
*M&W Auto Sales*  
*Harbor Lands, LP*  
*God's Pocket Photography*  
*Islanders Insurance*  
*R&R Accounting*  
*Ernie's Cafe*  
*Animal Inn & Wellness Center*  
*Homestead Mobile Home Park*  
*Valmark, Inc.*  
*Islanders Insurance*  
*Harbor Lands*  
*San Juan Pest Control*

### **Individuals & Families**

Alice Berenz  
 Judith Kotras  
 John Wade  
 Gary & Jeanne Turner  
 Sidney Thorson  
 June Vynne  
 Diane & Ted Buganski  
 Glenn & Diane Kaufman  
 Sondra deBeauclair  
 Barbara & Sam Buck  
 Sandy Davis  
 Kevin Roth  
 Ellis, Shelle, Sky & Isla Cropper  
 Vonnie Nichols

Fran Chevalier  
 Judith Sgro  
 Patsy & Jim Scribner  
 Connie & Guard Sundstrom  
 Donna Karls & Eric Miner  
 David & Karen Kratter  
 Tex & Ruby Blankenburg  
 Linda & James Bergquist  
 Margaret Gambill  
 Molly & Maurice Liebman  
 Pamela & John Rogers  
 Sheron Johnson  
 Jim & Jackie Huesman  
 Patrick & JoAnn Ballenger

## ***Memorial donations***

### **Bill Mason**

Kathryn L. Mason

### **Phyllis Gallenger Clarkson**

Lois & Noel Gallanger

### **Ruthe Ramirez**

Shelle, Ellis, Isla & Sky Cropper

### **Barbara Bryant Baldwin**

### **Richard McKenzie**

Donna Karls & Eric Miner

### **Lynn & Roger Loring**

John Wade

### **Dr. Colin Sandwith**

Karen & Richard King  
 Donna Karls & Eric Miner  
 Scott Sandwith

### **Etta Egeland**

### **Bob Nichols**

### **Wilfred Rouleau**

Vonnie Nichols

### **Art Wotton**

### **Evelyn Gagner Wotton Johnson**

Judith Wotton Sgro

### **Steve Barnes**

Linda & James Bergquist

## ***MHI Contributors***

Gene Hanacek  
 Claudia Mills  
 Sondra deBeauclair  
 Store More Storage  
 Emily & John Geyman  
 Diana Mancel  
 Don Nixon  
 Robin Jacobson

Linda & James Bergquist  
 Katherine Shelton  
 Carolyn Haugen  
 Gary & Linda Thompson  
 Alan & Lynn Weber Roohvarg  
 Peg Gerlock & Phil Johnson  
 Estate of Dr. Colin J. Sandwith  
 Scott Sandwith

Donna Karls & Eric Miner  
 Lovel & Boyd Pratt  
 Jim and Jackie Huesman  
 Molly & Maurice Liebman  
 Judith Wotton Sgro  
 Kevin Loftus  
 San Juan Heating  
 Bobby Ross Construction

***Your support is very much appreciated. Thank you for your generosity!***

## ***History tidbits*** (continued from page 4)

In 1976, the original phone at the Museum was a four party line. Records show that in 1978, the bill was \$6.76 per month.

In 1981, the Craft Guild of the Museum raffled off a doll house that took the members well over a year to build and furnish. The resulting \$497 donation to the Museum was very much appreciated.

On April 22, 1947, CBS National radio aired a program called "Lantern in the Dark" which told the story of Ms. Elsie Scott, an early San Juan County Public Health Nurse.

In 1972, the roof was replaced on the James King Farmhouse, for the cost of \$600.00.

San Juan Historical  
Society & Museum  
P. O. Box 441  
323 & 405 Price St.  
Friday Harbor, WA 98250  
360-378-3949  
sjmuseum.org  
historicsanjuans.org  
~~~~~

**Board of Trustees**

Mary Jean Cahail,  
*President*  
Mike Vouri,  
*Vice President*  
Christine Minney,  
*Treasurer*  
Diana Mancel,  
*Recording Secretary*

Mary Jane Anderson  
Mary Jo Bolte  
Robin Jacobson  
Romona Jones,  
Paula Sundstrom  
**Legal Counsel**  
Carla J. Higginson

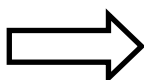
~~~~~  
**Staff**

Kevin Loftus,  
Executive Director  
museum\_admin@sjmuseum.org

**Address service requested**

Non-Profit Org.  
U.S. POSTAGE  
P A I D  
Friday Harbor  
WA 98250  
PERMIT NO. 18

**Check mailing label for  
membership renewal date**



*The Museum is a recipient of 2016 grant funding from San Juan County lodging tax funds. Proceeds derived from this grant help to defray operating expenses. We thank the San Juan County Council and their lodging tax advisory committee for this grant award. We thank the islands lodging owners and their guests for the continued financial support of the Museum.*

-----  
*Please detach this form at dotted line and return with your donation today. Thank you!*

Name \_\_\_\_\_

Address \_\_\_\_\_

City, State & Zip \_\_\_\_\_

Phone (\_\_\_\_\_) \_\_\_\_\_ Email \_\_\_\_\_

**This is a (check one)** ☐ Renewing Membership ☐ New Membership ☐ Donation

Yearly membership contribution: \$ \_\_\_\_\_ (amount of your choosing)

Memorial contribution: \$ \_\_\_\_\_ in memory of \_\_\_\_\_

I wish to donate \$ \_\_\_\_\_ to the SJI Museum of History and Industry (MHI)

Year end contribution: \$ \_\_\_\_\_

**Please make checks payable to San Juan Historical Society, PO Box 441, Friday Harbor, WA 98250**

**The San Juan Historical Society is a 501(c)(3) nonprofit organization, tax i.d.# 23-7022221.**